

YOOYOUNG PHARMACEUTICAL

“COMPANY PROFILE 2021”



Company
Introduction

Global
Business

Main
Products

Factory



COMPANY INTRODUCTION



COMPANY OVERVIEW



Sales revenue	Mil. USD 101 (Y 2020) Mil. USD 10 (Y 2020) * Export
Business Field	Pharmaceuticals & Medical Devices
Business Scope	Fully integrated pharmaceutical company ↳ In-house R&D ↳ Manufacturing ↳ Sales & marketing ↳ Overseas Sales

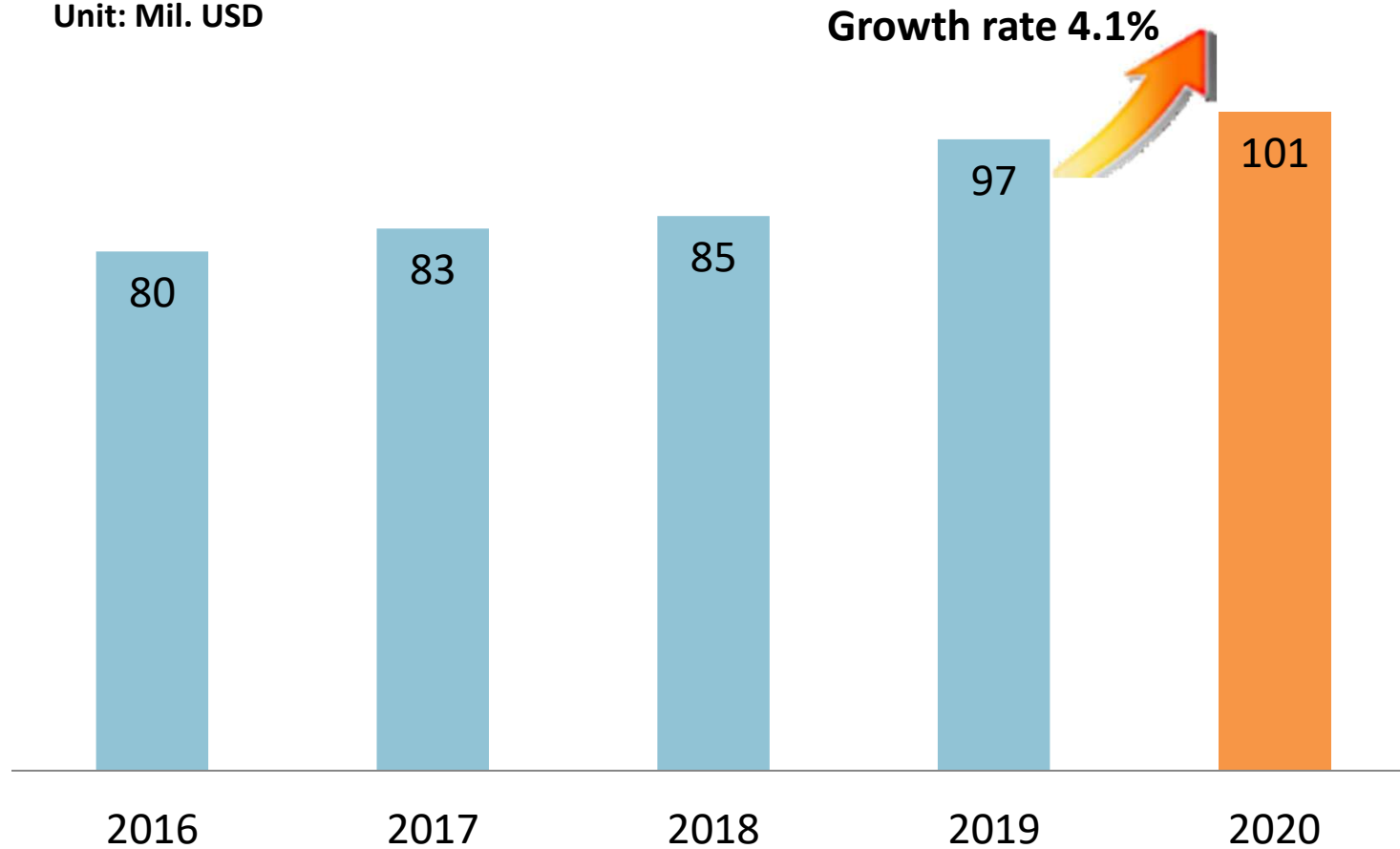
* Reference: Internal Data 2020
* Exchange rate: 1 USD= 1,100 KRW

COMPANY INTRODUCTION



■ Sales Performance

Unit: Mil. USD



* Reference: Internal Data 2020

* Exchange rate: 1 USD= 1,100 KRW

COMPANY INTRODUCTION



■ YOOYOUNG HISTORY

2019. 02. Approved GMP [PPB, Kenya].

2018. 05. Re-accredited as foreign drug manufacturer by JAPAN MHLW.

Renewal of GMP Inspection by JAPAN PMDA for OSD.

04. Renewal of ISO 13485.

2017. 04. Renewal of CE Mark for HA Inj. for Knee Arthritis.

2015. 08. Accredited by PIC/s GMP Inspection.

2014. 07. First export to Europe [HA Inj. for Knee Arthritis]

01. Consolidated and Extended of research laboratory [Pharmaceutical + Bio]

2012. 04. GMP Inspection by JAPAN PMDA for the Injections

Obtained CE Mark for HA Inj. for Knee Arthritis.

2009. 09. GMP Inspection by JAPAN PMDA for OSD.

2008. 05. Accredited as foreign drug manufacturer by JAPAN MHLW.

2007. 06. Extended Jincheon Factory on the level of EU-GMP.

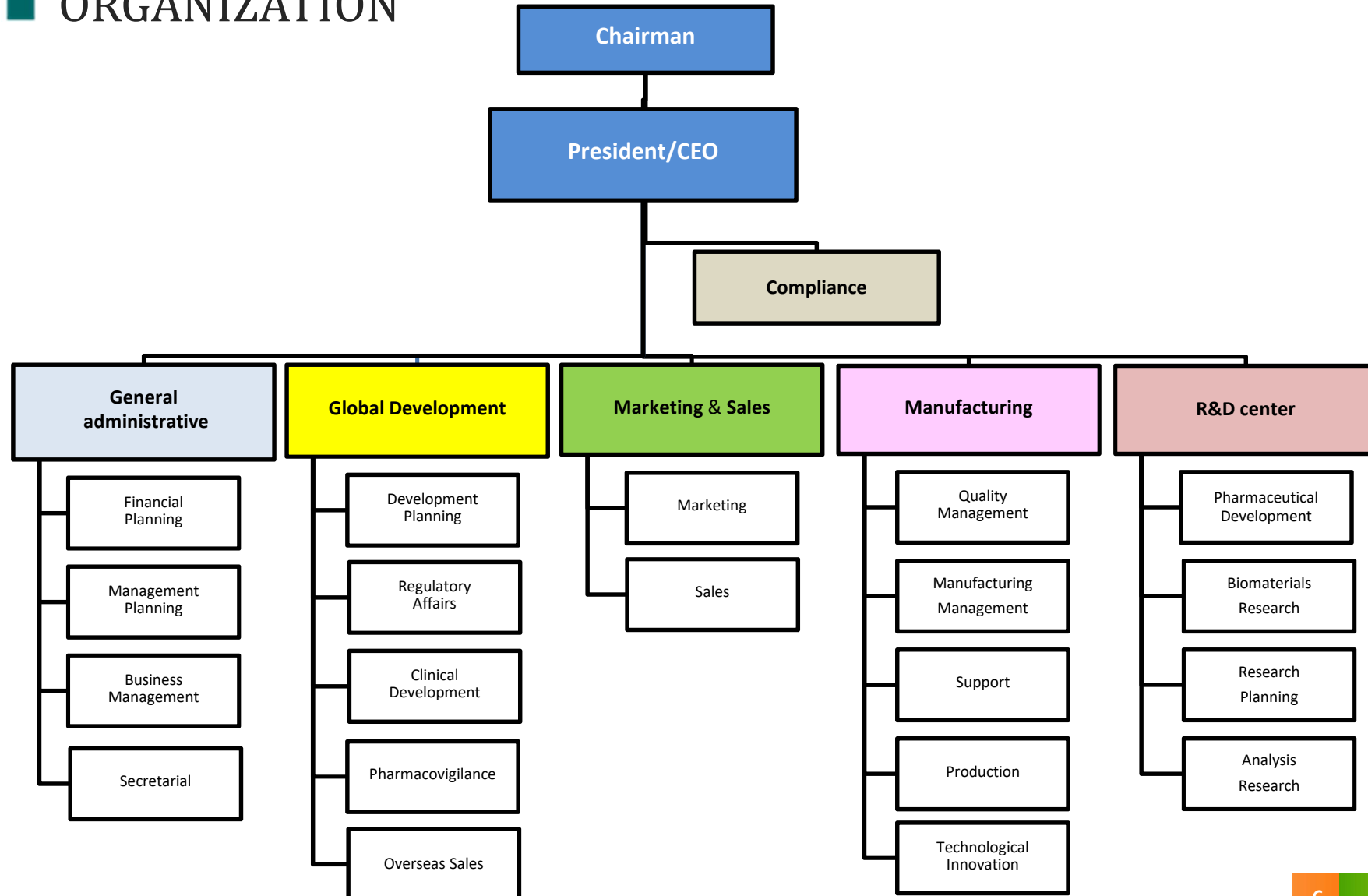
1991. 04. Approved KGMP by Korea MOH [Ministry of Health].

1981. 12. Established.

COMPANY INTRODUCTION



■ ORGANIZATION



COMPANY INTRODUCTION



BUSINESS INFORMATION

- The lead of Pre-filled syringe product
- Long & strong history and specializing in OS sector



- Export to over 20 countries (EU, Japan, etc.)
- Japanese Market: 70%
- Top 4 in Contract Manufacturing Business in Korea

- Bio, Pharmaceutical Research Laboratory Center
- Focusing on development of Incrementally modified drug and Biologics



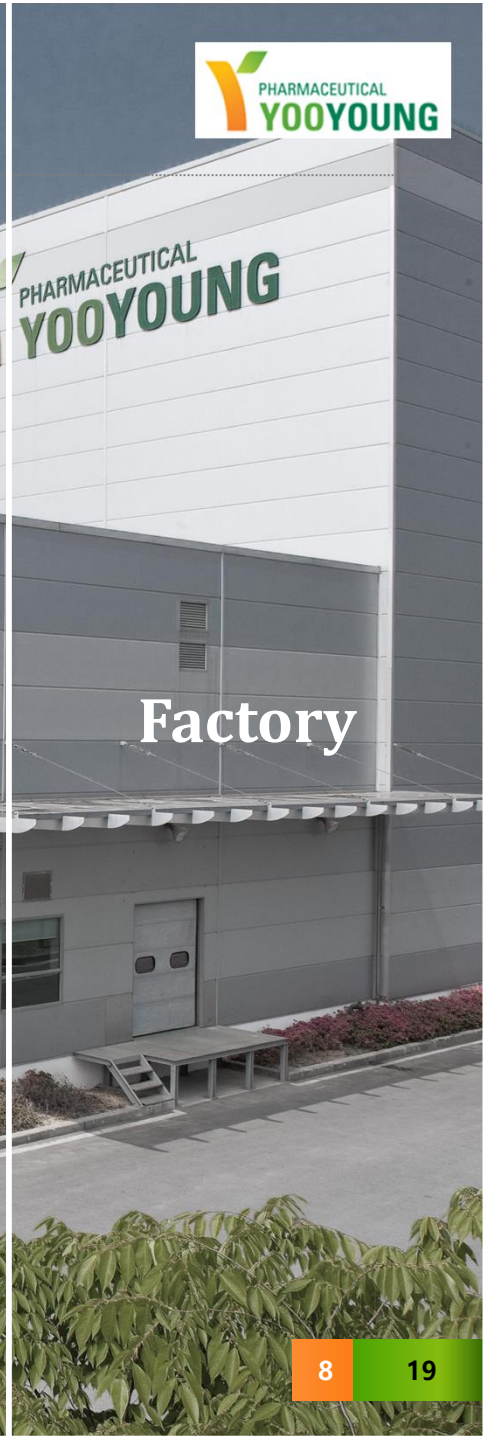
Company Introduction



Global Business



Main Products



Factory

EXPORTING COUNTRIES



GLOBAL BUSINESS

■ Major exporting countries

- Japan: Sulfasalazine Tablet 250/500mg [CMO business]
- EU(France, Poland and Turkey), CIS: HA Inj.
- MENA: Enoxaparin sodium Inj., HA Inj.
- SEA: HA Inj., Rabeprazole Tab., Alendronate Tab.
- LaTam: HA Inj., Enoxaparin sodium Inj , Baclofen Tab.,
Ibandronic Acid Inj., Pregabalin 75/150mg . Etc.





Company
Introduction



Global
Business



Main
Products



Factory

Main Products



■ PRODUCTS LIST

PRODUCT NAME	COMPOSITION	INDICATION
Atri Injection [CE]	Sodium Hyaluronate 25mg/2.5mL	Arthritis, Scapular periarthritits
Atri Plus Injection [CE]	Sodium Hyaluronate 20mg/2.0mL	Arthritis, Scapular periarthritits
Cnoxane Injection	Enoxaparin Sodium 20/30/40/60/80mg	LMWH : Anti-Coagulants
Yoosetron Injection	Palonosetron HCl 0.056mg/mL (1.5, 5ml)	Chemotherapy Induced Nausea and Vomitting
Ibandronate Injection	Sodium Ibandronate 3.375mg/3mL	Osteoporosis in postmenopausal women
Asasurfan Tablet	Sulfasalazine 500mg/250mg	Ulcerative colitis
Yooritek Tablet	Riluzole 50mg	Amyotrophic Lateral Sclerosis(ALS)
Rabetra Tablet	Rabeprazole Sodium 10/20mg	PPI
Baclan Tablet	Baclofen 10mg	Muscle relaxants
Altoriton Plus Tablet	Risedronate 35mg + Vitamin D	Osteoporosis in postmenopausal women
Arenmax Tablet	Alendronate 70mg	Osteoporosis, Bone-resorption inhibitor
Lalaca Capsule	Pregabalin 75mg/150mg	Epilepsy, Neuropathic pain, Fibromyalgia syndrome

Main Products



R&D Pipeline

Project	Indication	Status						
		D	Pre	P1	P2	P3	R	L
Clinical Project(In-house)								
Resyno-One(HA monotherapy)	Osteoarthritis	Completed						'21
YYC301(FDC*)	Osteoarthritis	Completed				Ongoing		'24
YYD601(PPI DDS)	GERD	Completed				Completed		'21
YYC506(FDC)	Dyslipidemia	Completed		Ongoing		Ongoing		'24
YYC405(FDC)	T2DM	Completed		Ongoing		Ongoing		'24
In-licensing Project								
Simdax®(Levosimendan)	AHF					Ongoing		'23
Bemfola®(Follitropin alfa)	Infertility						Completed	'21

Completed

Ongoing

*FDC : Fixed Dose Combination



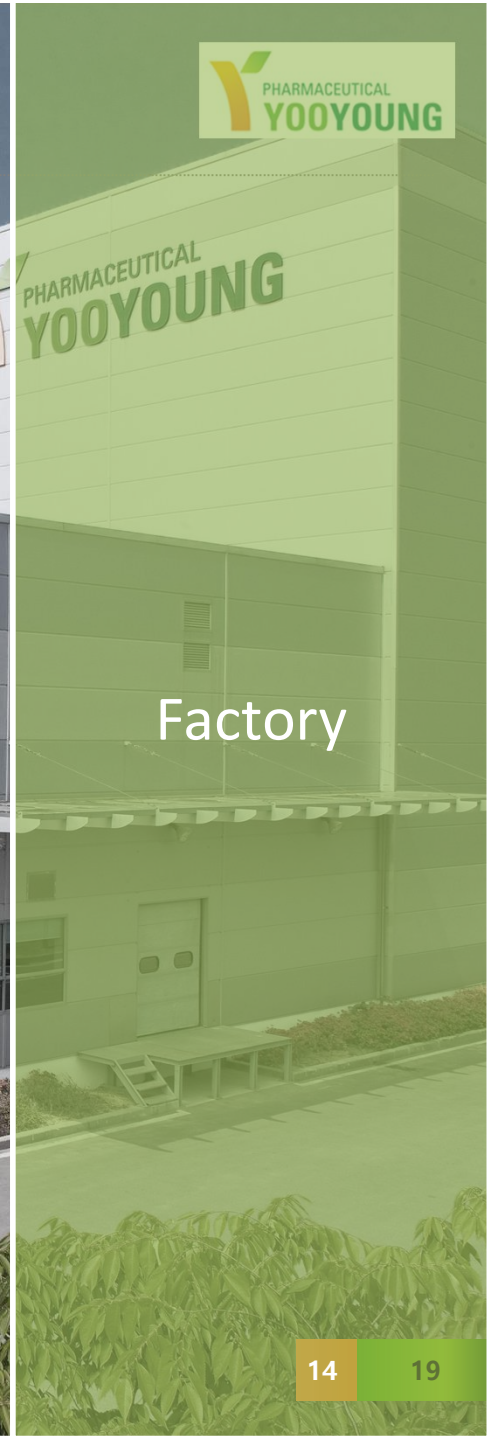
Company
Introduction



Global
Business



Main
Products



Factory

FACTORY INTRODUCTION

■ SITE DESIGN

Size	23,000m ² (Land) 15,000m ² (Building)
Extension date	June 2007
Dosage form	- Oral Solid : Tablet, Capsule - Injection : Pre-filled syringe, Ampoule
Inspected by	- Korean MFDS (PIC/s) - Japanese PMDA - CE Authority



FACTORY INTRODUCTION

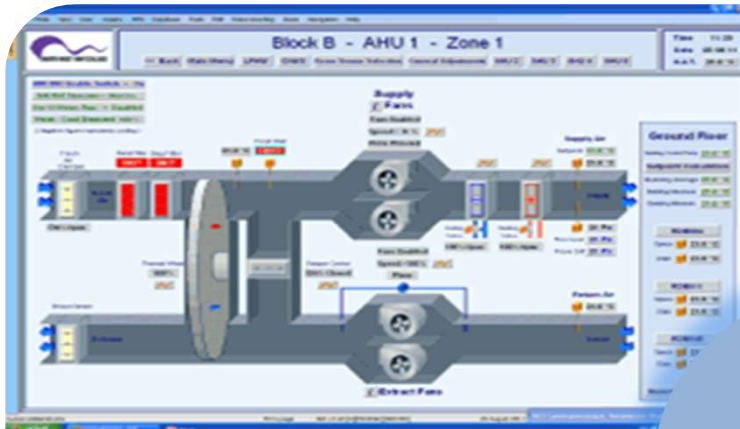
MANUFACTURING CAPACITY



Classification	Dosage	Capacity (1 Year)
Oral Solid Dosage	Tablet	350,000,000 Tab.
	Capsule	65,000,000 Cap.
Injection	Pre-filled Syringe	3,000,000 PFS.
	Ampoule	16,000,000 Amp.

FACTORY INTRODUCTION

■ FEATURE OF PRODUCTION FACILITIES



Building Management System (BMS)

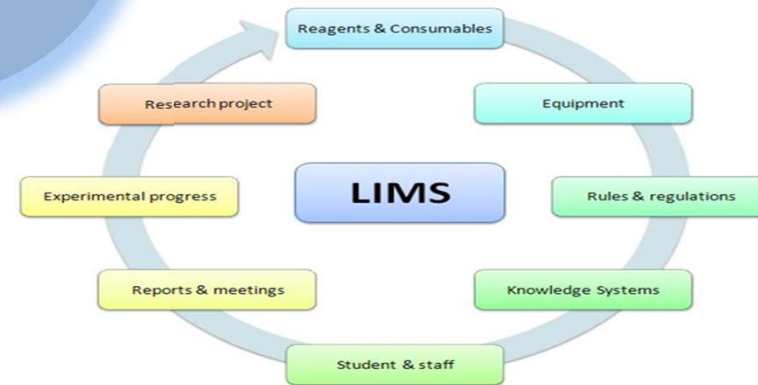


Warehouse Management System (WMS)

Global Standard Plant



Inj./OSD Manufacturing Execution System (MES)



Laboratory Information Management System (LIMS)

FACTORY INTRODUCTION

■ MANUFACTURING FACILITY



Pre-filled Syringe Line



Tableting Line



Film Coating System



Automatic Ampoule filling Line



Automatic Packaging Line



Automatic warehouse

Be With YooYoung!