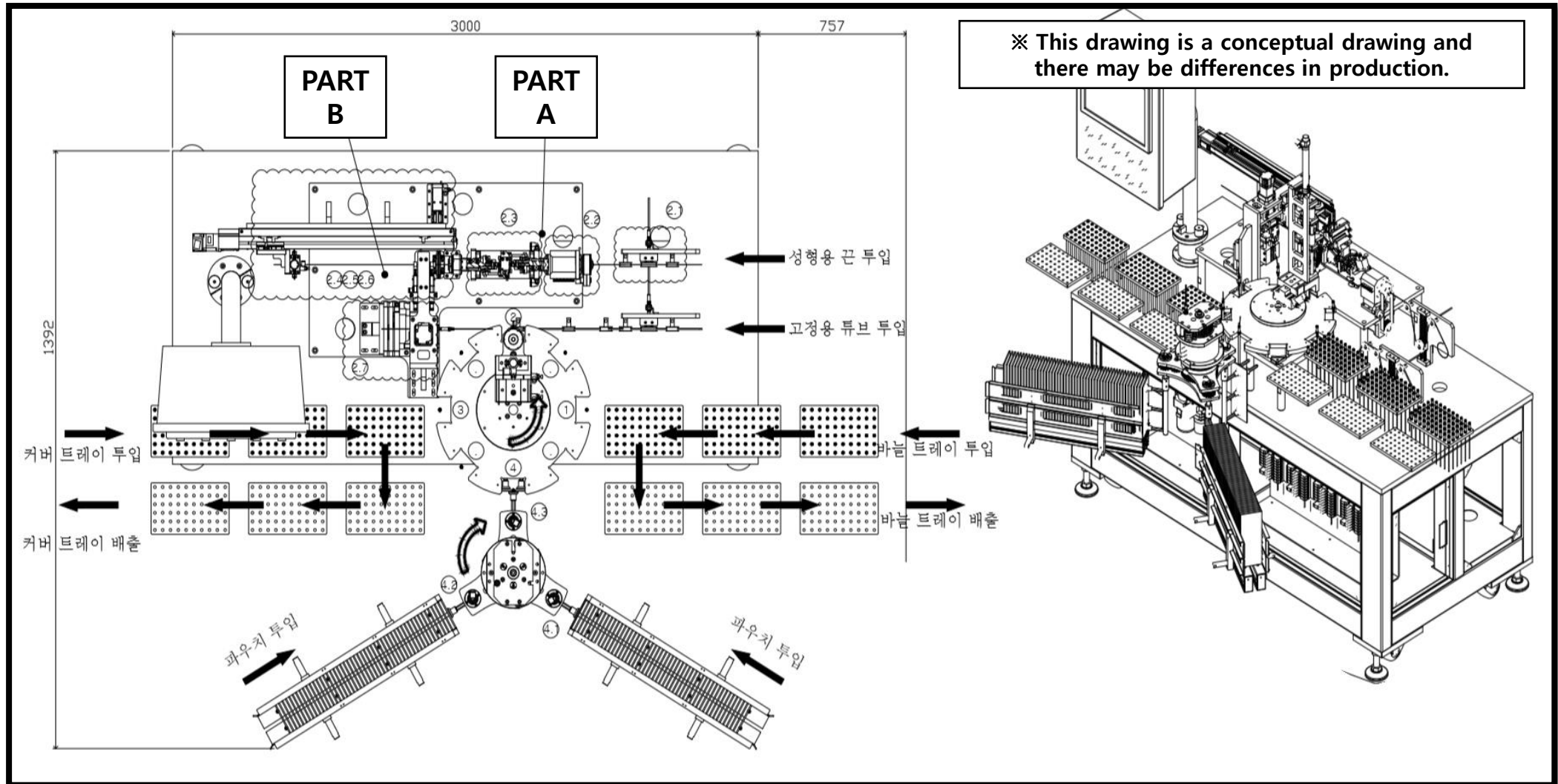




Thread lift Automation Equipment

Thread lift Automation Equipment

[Thread lift Automation Equipment Full Process Drawing]



Thread lift

Automation Equipment

[Thread lift Automation Equipment Process Drawing]

Manufacturing order

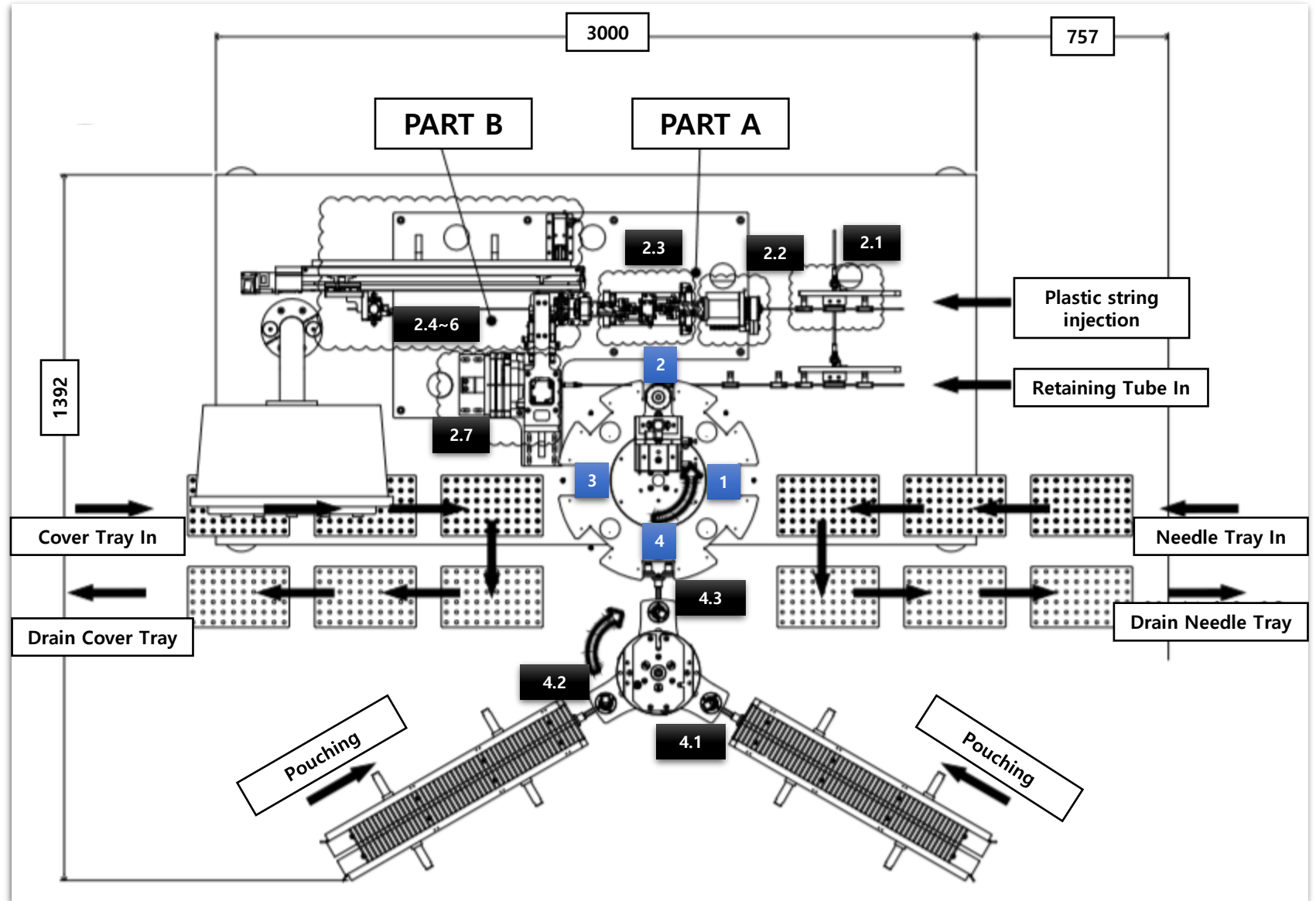
1. Needle injection
2. After the thread is inserted

- ▶ Insert Upper Plastic Cap (Shooting Supply Method)
- ▶ Insert Lower Tube (Roll Method)

- 2.1 string input (Roll Method)
- 2.2 String Molding Tool Rotation
- 2.3 String Molding
- 2.4 String cutting part
- 2.5 String Length Adjuster
- 2.6 String moving machine
- 2.7 String Insertion Unit

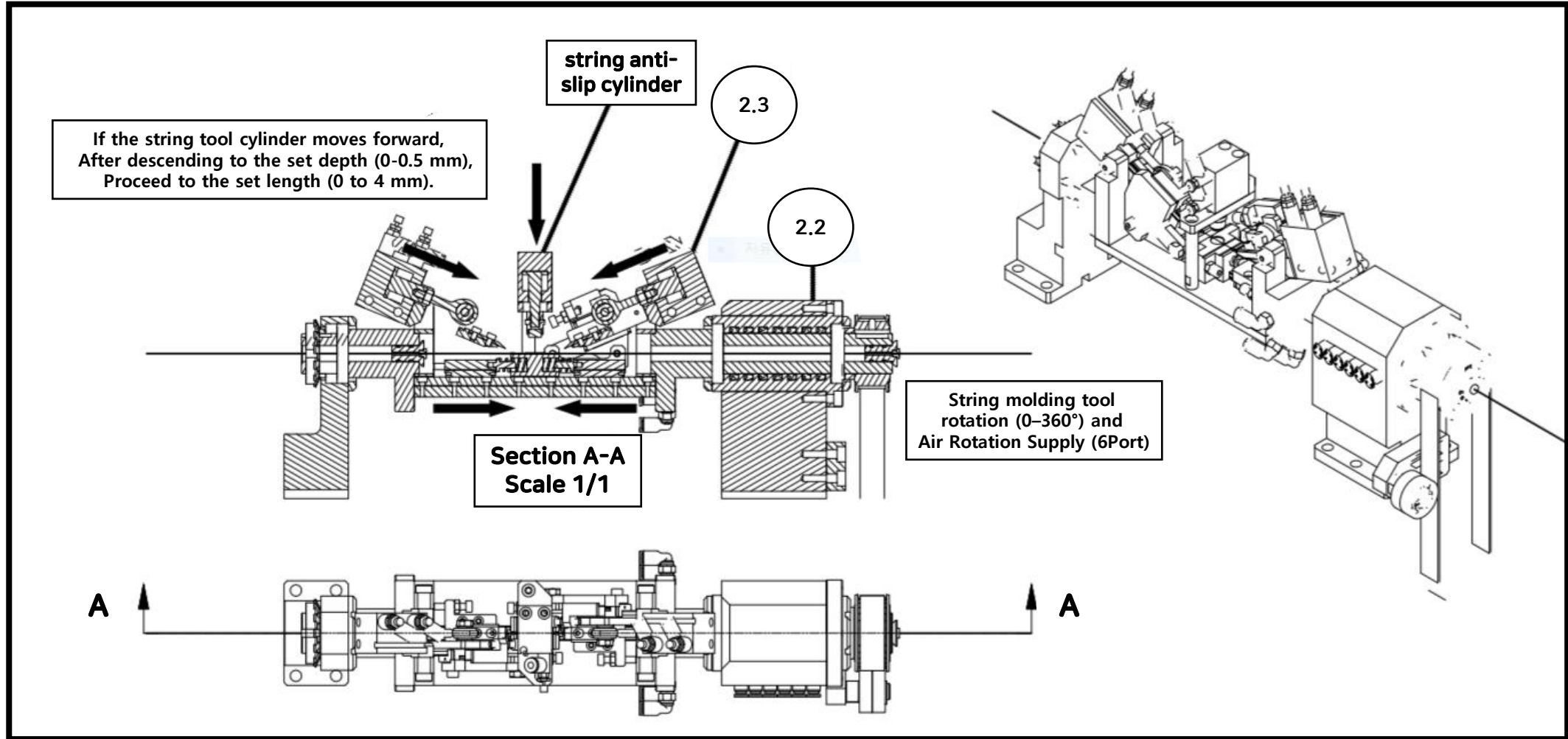
3. Cover Supply and Assembly

4. Package
 - 4.1 Pouching
 - 4.2 Pouching
 - 4.3 Finished product



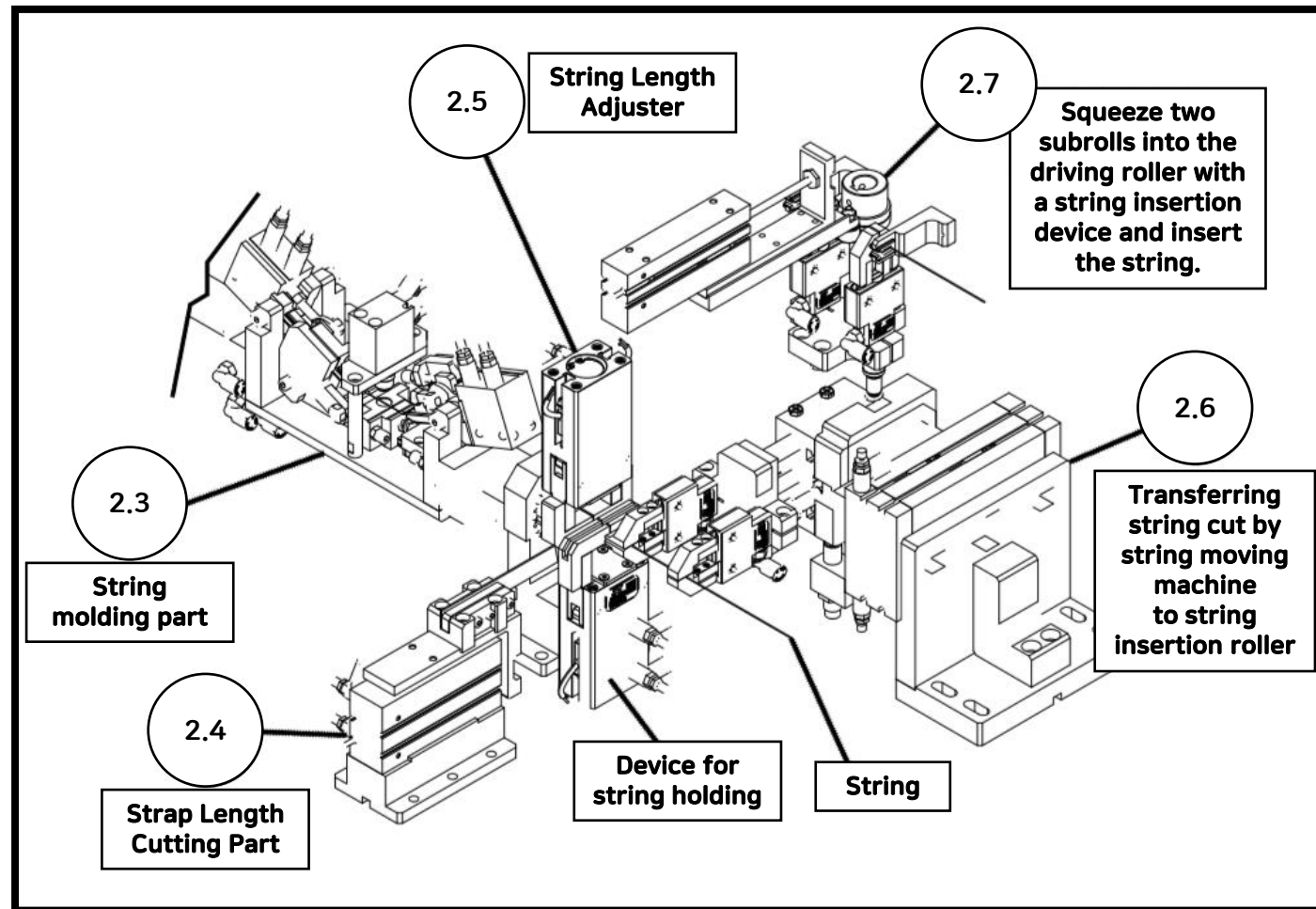
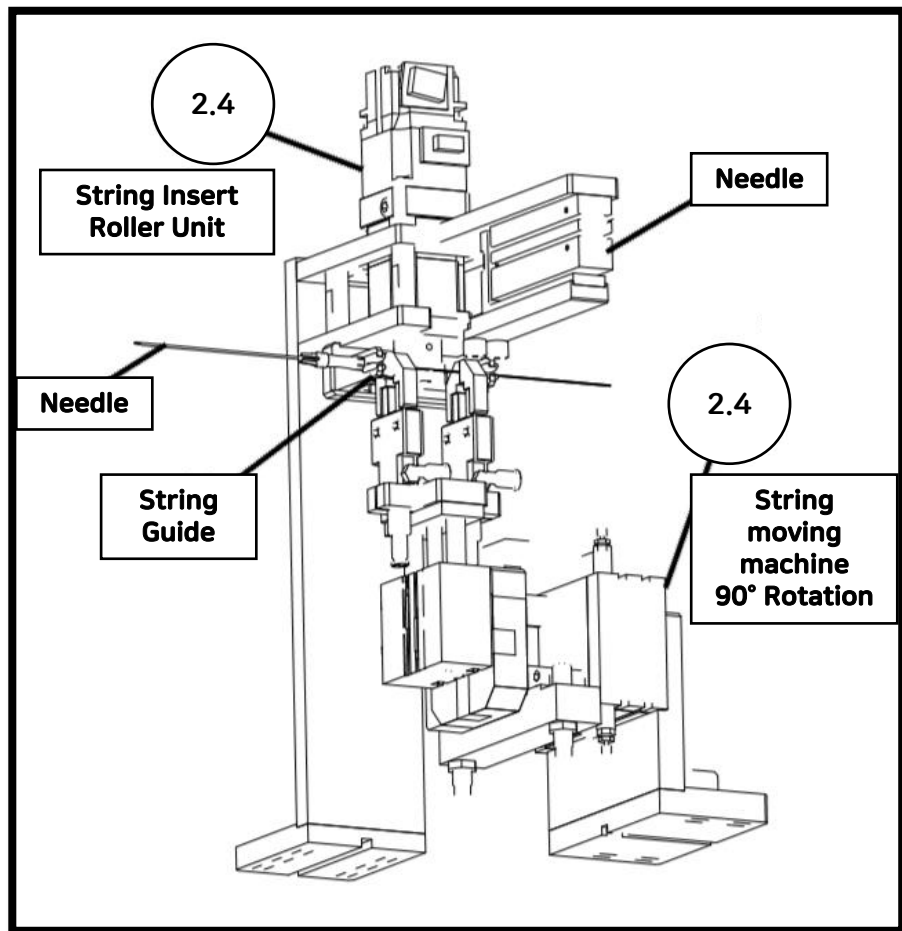
Thread lift Automation Equipment

[Thread lift Automation Equipment Process Drawing
: PARTA String Molding Tool Rotation Part Magnification]



Thread lift Automation Equipment

[Thread lift Automation Equipment Process Drawing : PART B String Molding and Cutting Part Magnification]



GENO IMPLANT

**Head office : Room 403, 4F, 20, 1-gil, Magok Jungang 5-ro, Gangseo-gu,
Seoul (Botanic Biz Tower)**

**Factory: GENO IMPLANT Co., Ltd. 199-20, Bangkkoji-gil, Seotan-myeon,
Pyeongtaek-si, Gyeonggi-do, Republic of Korea**

TEL : 070-4288-4070

FAX : 02-322-2712

