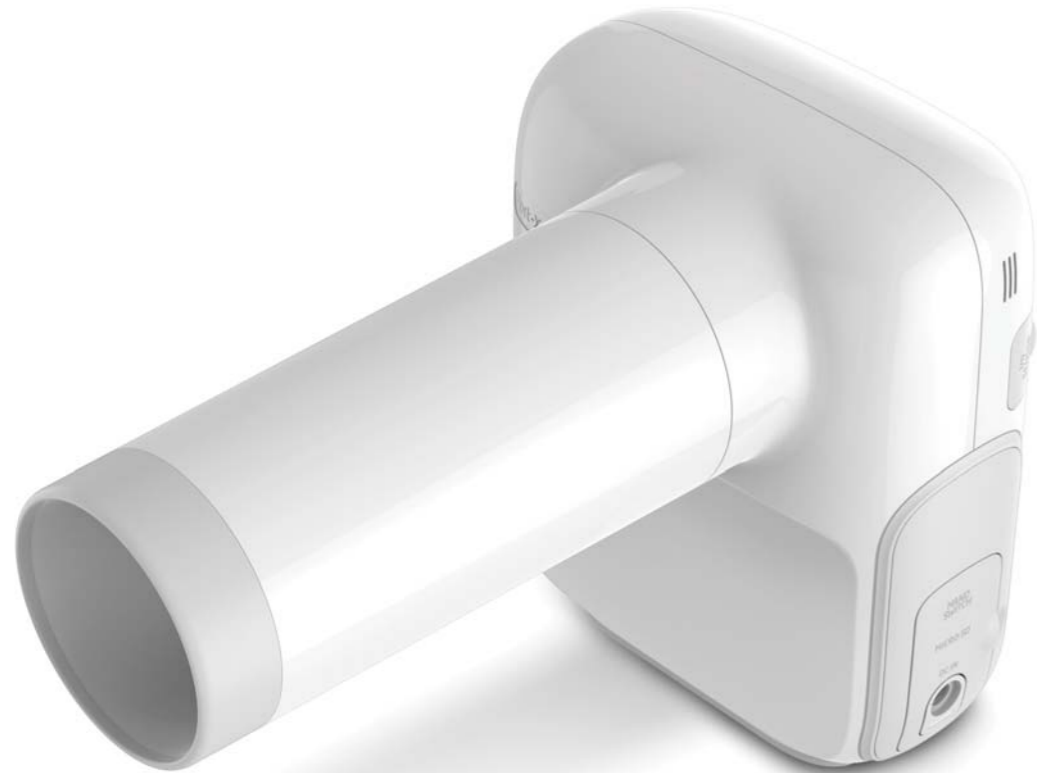


Innovate Portability : PORT-X IV

All In One Portable X-ray



1.5 ^{kg}
Light weight

0.4 ^{mm}
Focal spot

70 ^{kV}
Tube voltage

Wireless
Transfer and share X-ray image files

LCD
Full color

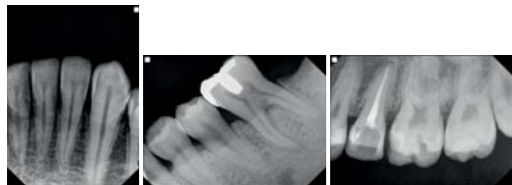
Battery
Li polymer
22.2VDC, 1,000mAh

Compact
170 (W) x 138 (D) x 155 (H) mm

Twain
Interface



reddot award 2017



Port-X IV

Portable Dental X-ray System



Superior image quality

Portable camera type

Easy UI manipulation

Compact size

All In One Portable X-ray

- Portable X-ray + I/O sensor integrated system
- Immediate image display on LCD with I/O sensor connections



Compact and sharp portable X-ray

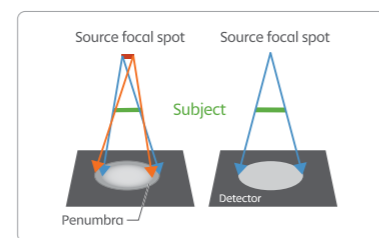
- Ergonomic design for one handed operation
- Lightweight and compact due to optimal tank design
- Image viewer with clear IPS LCD Screen **IPS**
- Winner of Red Dot Award for Design 2017

All In one portable X-ray

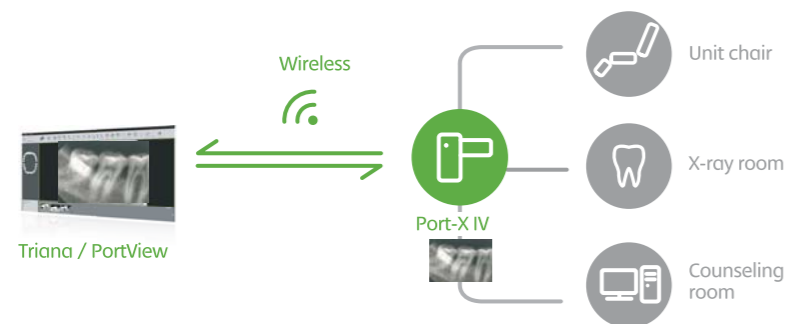
- Straightforward process for image capture with intuitive icons and track ball
- Seamless data transmission to PC & Mobile App and firmware upgrades via Wireless
- Multiple language support
- Patient and data management capabilities without a PC
- High-capacity battery capable of lasting all day without the need to recharge
Li-polymer 22.2VDC, 1,000mAh

Superior image quality

- Crystal clear images from 0.4mm Focal spot and 70kv X-ray Tube



▶ Effect of focal spot size



Network structure

Innovate Portability : PORT-X IV

All In One Portable X-ray

