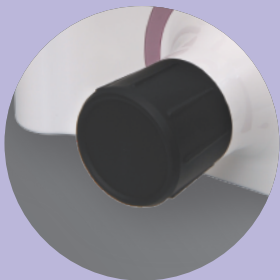


MINE

Portable X-ray

 **HDT**

www.picohdt.com



SAFETY



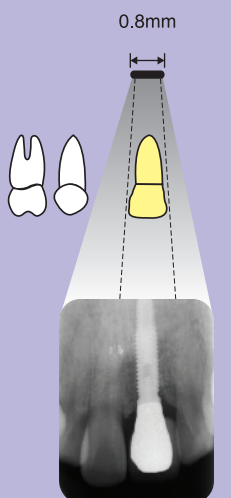
CONVENIENCE



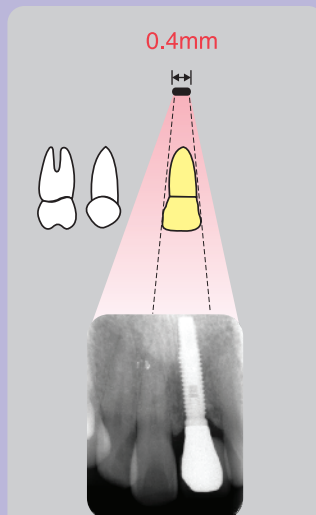
MULTI MODE

Mine is a dental portable X-ray, presenting user safety and patient convenience with light weight and compact size.

SMALL FOCAL SPOT



General Focal Spot



Mine Series Focal Spot



Technical Specification

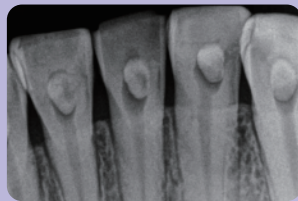
Model		MINE
Input Power	X-ray Unit	19VDC 3.16A
	Battery Charger	100-240 VAC, 50-60Hz 1.7A
Output Power		120W
Power Supply		11.1 VDC(Battery)
Frequency		100kHz
Tube kV/mA		60kV/2mA(Fixed)
X-ray tube	Focal spot size	0.4mm
Weight		1.8kg

*Product specifications are subject to change without prior notice



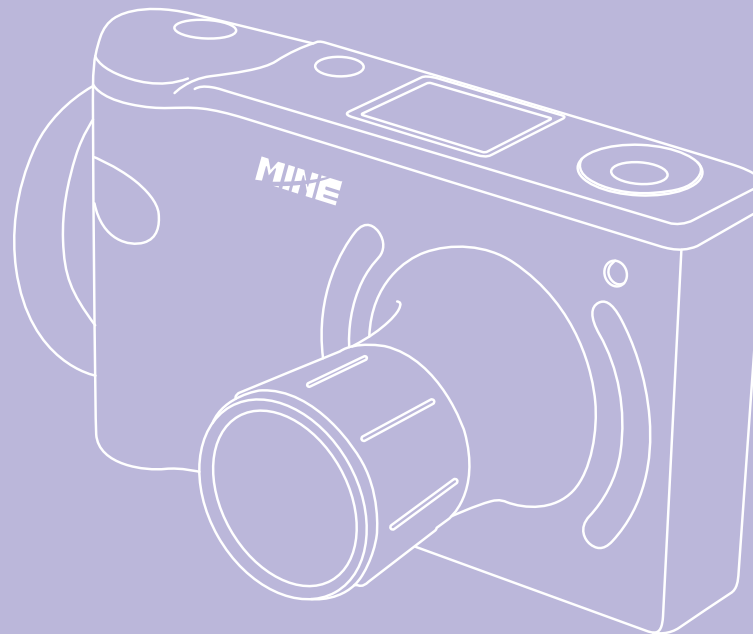
Long-lasting Battery

Over 100 exposures per 1 time charge.



High-resolution Images

Image quality is improved by reduction of ripples and phantom phenomenon through high frequency inverter.



HDT

29, Uchi-ro 880beon-gil Buk-gu, Gwangju, Korea

Tel +82-62-431-7752 Fax +82-62-434-7752 E-mail contact@picohdt.com

